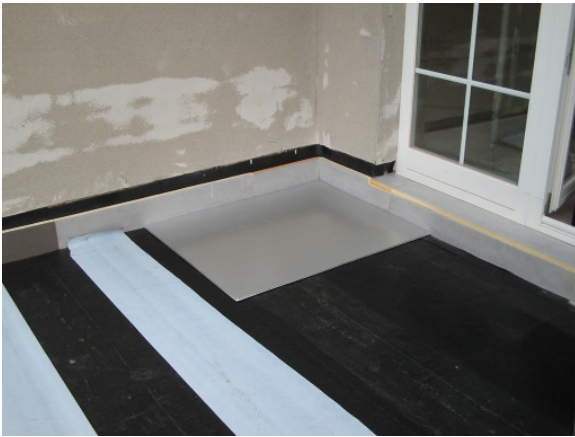


## Report from the Construction Site



**Kind of insulation: Terrace/roof insulation**

**Construction:** C. Hasse & Sohn GmbH & Co,  
Sternstraße 10, 29525 Uelzen

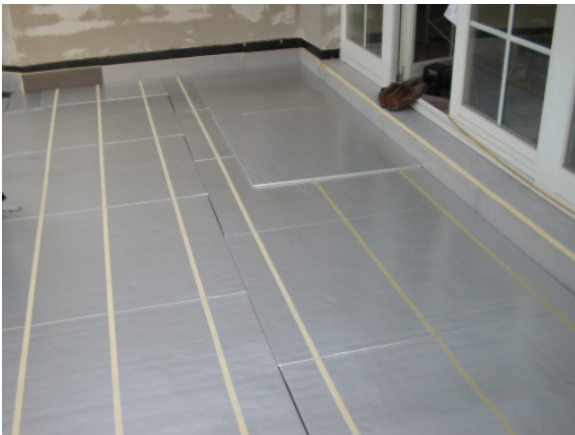
**Contact:** Michael Schwarz, Sternstraße 10, 29525  
Uelzen (Tel. 0581-97 353 143)

**VIP product:** Porextherm Dämmstoffe GmbH

**Location:** New detached house with roof terrace in  
Zossen (near Berlin)

**Date of realization:** July 2004

**Funding:** -



**Description of the construction:**

C. Hasse & Sohn integrated VIP elements into a waterproof roof system (Kubidritt-SlimRoof-System), whereby each individual component, from the moisture barrier to the waterproofing, was optimized. The roof is designed on the basis of a non-ventilated roof. There are two layers of VIPs (2x15 mm) arranged to minimize edge effects.

**Figure 1:** First layer of VIPs being laid on the self-adhesive moisture barrier system Hassolan Duo (wall joints and threshold with construction insulation).

**Figure 2:** Second layer of VIPs being laid in a different alignment to the first. The VIPs are fixed with self-adhesive tape. The two VIP layers (each 15 mm thick) ensure an insulation efficiency in line with DIN 4108-2 even if the vacuum is no longer in tact.



**Figure 3:** Forming the gutter with polyurethane insulation boards and the wall joint with perpendicular insulation made from phenolic resin foam.