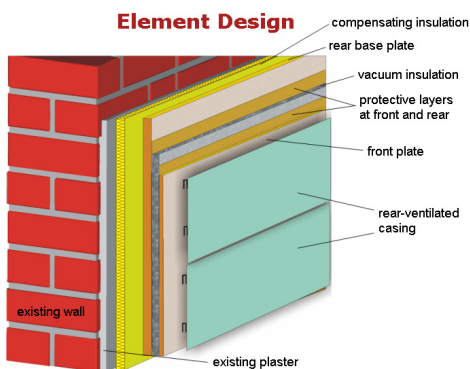


Report from the construction site



Kind of insulation: Facade insulation

Construction: IGRT (Bochum), PDREI (Mühlthal), Variotec (Neumarkt), IWU (Darmstadt), ift (Rosenheim)

Contact: M. Großklos, IWU, m.grossklos@iwu.de

VIP-product: Variotec Sandwichelemente GmbH

Location: Hofheim am Taunus

Date of realization: 2006

Funding: German Ministry for Economics and Technology and the Hessian Ministry for Economics, Transport and Infrastructure

Description of the construction:

The facades of three buildings adjacent to the road were insulated with prefabricated, floor-to-ceiling elements with integrated VIPs. The windows had already been integrated into the facade elements. The VIPs are 4 cm thick. The outer casing plates were mounted on-site. The elements were produced by Variotec Sandwichelemente.

Figure 1: Assembling the elements. Here, the VIPs (protected on both sides) are being fixed to the base plate.

Figure 2: Cross-section of the element

Figure 3: On-site installation of the elements